



THE INTOURO.

Technical data and equipment at
a glance.

Mercedes-Benz

The standard for buses.



THE INTOURO AT A GLANCE.

Intouro



Length [mm]:	12.180	Height [mm]:	3.365
Turning circle min. [mm]:	21.458	Width [mm]:	2.534

Intouro K



Length [mm]:	10.745	Height [mm]:	3.365
Turning circle min. [mm]:	18.344	Width [mm]:	2.534

Intouro M



Length [mm]:	13.090	Height [mm]:	3.365
Turning circle min. [mm]:	23.834	Width [mm]:	2.534

Intouro L



Length [mm]:	14.880	Height [mm]:	3.365
Turning circle min. [mm]:	24.056	Width [mm]:	2.534

TECHNICAL DATA AND EQUIPMENT AT A GLANCE.

	Intouro	Intouro K	Intouro M	Intouro L
Dimensions				
Length [mm]	12.180	10.745	13.090	14.880
Length incl. mirrors [mm]	12.510	11.075	13.420	15.205
Width [mm]	2.534	2.534	2.534	2.534
Height [mm]	3.365	3.365	3.365	3.365
Inner stand height central aisle [mm]	2.180	2.180	2.180	2.180
Parapet height (above ground) [mm]	750	750	750	750
Wheelbase front axle-drive axle [mm]	6.080	5.270	6.990	7.180
Wheelbase drive axle - trailing axle [mm]	-	-	-	1.600
Tyre size	295/80 R 22,5	295/80 R 22,5	295/80 R 22,5	295/ 80 R 22,5
Overhang at front [mm]	2.800	2.175	2.800	2.800
Overhang at rear [mm]	3.300	3.300	3.300	3.300
Turning circle min. [mm]	21.458	18.344	23.834	24.056
Turning circle BOKraft [mm]	25.000	25.000	25.000	25.000
Ring width turning circles min. [mm]	6.857	5.982	7.277	7.311
Ring width BOKraft [mm]	5.945	4.766	6.917	7.039
Ring width max. permissible according to BOKraft [mm]	7.200	7.200	7,2	7.200
Track circle minimal [mm]	17.424	15.316	19.797	20.021
Wheel impact front axle max. [°]	54 / 46	54 / 46	54 / 46	54 / 46
Cockpit height [mm]	891	891	891	891
Usable volume / capacity AdBlue [l]	53	36	53	53

Capacity fuel tank left / right [l]	185	185	185	185
Luggage compartment volume [m³]	5,2	3,7	6,55	6,85
Floor height over roadway [mm]	891	891	891	891
Pedestal height [mm]	210	210	210	210
Entry height door 1 [mm]	361	363	359	362
Entry height door 2 [mm]	378	370	370	370
Slope angle in front [°]	7,1	9,1	7,1	7,1
Slope angle rear [°]	7,7	7,7	7,7	7

Transmission				
Engine	Mercedes-Benz OM 936	Mercedes-Benz OM 936	Mercedes-Benz OM 936	Mercedes-Benz OM 470
Engine type	6-cylinder in-line engine	6-cylinder in-line-engine	6-cylinder in-line-engine	6-cylinder in-line-engine
Output [kW]	220	220	220	290
Output 2* [kW]	260	260	260	-
Max. torque [Nm]	1.200	1.200	1.200	1.900
At speed [1/min]	1.200-1.600	1.200 - 1.600	1.200-1.600	1.100
Displacement [l]	7,7	7,7	7,7	10,7
EU emissions standard	Euro VI E	Euro VI E	Euro VI E	Euro VI E
Transmission	Mercedes-Benz GO 190, 6-Gang	Mercedes-Benz GO 190-6, 6-speed	Mercedes-Benz GO 190, 6-speed	Mercedes-Benz GO 250-8
Transmission 2*	ZF Ecolife 2	Voith DIWA.6	Voith Diwa.6	Voith Diwa.6

	Intouro	Intouro K	Intouro M	Intouro L
Chassis				
Steering	power steering	power steering	power steering	power steering
Front axle, type	ZF RL 82 EC	ZF RL 82 EC	ZF RL 82 EC	ZF RL 82 EC
Front axle: independent suspension, anti-roll bar	●	●	●	●
Driven axle, type	Mercedes-Benz RO 440	Mercedes-Benz RO 440	Mercedes-Benz RO 440	Mercedes-Benz RO 440
Drive axle: with anti-roll bar	○	●	○	○
Trailing axle, type	-	-	-	ZF 82 RL EC
Trailing axle: active steering, independent suspension	-	-	-	●
Raising/Lowering system	○	○	○	○
Kneeling	○	○	○	○
Air suspension via electronic level control system (ENR)	●	●	●	●
Brakes				
Pneumatic disc brakes on all axles	●	●	●	●
Electronic Stability Programme (ESP®)	●	●	●	●
Electronically controlled braking system (EBS)	○	○	○	●
Anti-locking system (ABS)	●	●	●	●
Brake Assist (BAS)	○	○	○	●
Acceleration Slip Regulation (ASR)	●	●	●	●
Retarder limiter (RL)	○	○	○	○
Retarder	○	○	○	●
Automatic bus stop brake with pull-away lock	○	○	○	○
Parking brake	●	●	●	●
HOLD function	○	○	○	○
Hill-start assist	○	○	○	○

	Intouro	Intouro K	Intouro M	Intouro L
Safety and driver assistance systems				
Rollover strength compliant with in ECE R29.03	●	●	●	●
Lane Assist (SPA)	○	○	○	○
Tyre Pressure Monitoring (TPM)	●	●	●	●
Active Brake Assist 6 (ABA 6)	○	○	○	○
Front Collision Guard (FCG)	●	●	●	●
Sideguard Assist 2	●	●	●	●
Electronic Stability Program (ESP®)	●	●	●	●
Reversing camera	●	●	●	●
Reversing buzzer	○	○	○	○
Extinguishing system	●	●	●	●
Rain-light sensor	●	●	●	●
Flat wiper blades with water fed through wiper blade	●	●	●	●
Rollover strength compliant with ECE-R 66.02	●	●	●	●
360° Camera	○	○	○	○
Traffic Sign Assist	●	●	●	●
Frontguard Assist	●	●	●	●
Attention Assist (AtAs)	●	●	●	●
MirrorCam	○	○	○	○
Profitability				
Driver Score	○	○	○	○
Tyre Pressure Monitoring (TPM)	○	○	○	○

	Intouro	Intouro K	Intouro M	Intouro L
Transport capacity				
Number of seats – standard seating	55	47	63	71
Passenger capacity max.	92	79	103	117
Seating type Inter Star Eco (ISE)	●	●	●	●
Seating type Travel Star Eco (TSE) Softline	○	○	○	○
Driver's seat GRAMMER Linea MSG 90.6 P, air-sprung	●	●	●	●
Driver's seat ISRI 6860, integrated pneumatic system, 3-point seat belt	○	○	○	○
Wheelchair space	○	○	○	○
Weight and fuel tanks				
Capacity of fuel tank [l]	ca. 185	ca. 185	ca. 185	ca. 185
AdBlue® additive tank [l]	ca. 53	ca. 36	ca. 53	ca. 53
Gross vehicle weight [kg]	19.500	19.500	19.500	24.750
Axle loads, max. permissible front axle [kg]	7.500	7.500	7.500	7.500
Axle loads, max. permissible drive axle [kg]	12.600	12.600	12.600	12.600
Permissible weight trailing axle [kg]	-	-	-	5.750

	Intouro	Intouro K	Intouro M	Intouro L
Heating, air conditioning and ventilation				
Driver's area air conditioning	○	○	○	○
EvoCool Basic	●	○	●	○
EvoCool Comfort	○	○	○	-
Cooling capacity passenger compartment [hp/kW]	32	32	32	32
Heating power passenger compartment [hp/kW]	36	36	36	36
Turbo roof ventilator	●	●	●	●
Roof-mounted air-conditioning system with heat pump	○	○	○	○
Electric roof air conditioning (modular system)	○	○	○	○
Refrigerant filling capacity [lbs/kg]	9,5	9,5	9,5	9,5
CO ₂ equivalent [lbs/t]	13,585	13,585	13,585	13,585
Doors and glazing				
Number of doors	2	2	2	2
Outward swiveling door	●	●	●	●
Lift	○	○	○	○
Single glazed	●	●	●	●
Double glazed	○	○	○	○
Windscreen heatable	○	○	○	○

	Intouro	Intouro K	Intouro M	Intouro L
Lighting				
Low beam	●	●	●	●
High beam	●	●	●	●
Daytime driving lights with LED technology	○	○	○	○
Daytime driving lights with halogen	●	●	●	●
Headlamps Bi-Xenon incl. cleaning system	○	○	○	○
Front fog lamp	○	○	○	○
Cornering light	○	○	○	○
Ambient lighting for reverse driving	○	○	○	○

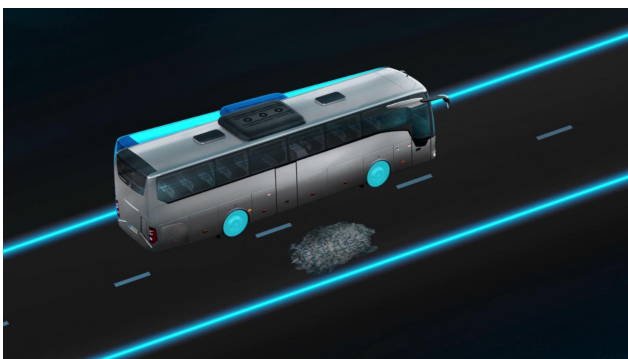
● Standard equipment ○ Optional equipment * Optional equipment

SAFETY.

Sideguard Assist 2

Sideguard Assist 2 is a safety assistance system that supports the driver in critical situations when turning right or turning left when visibility is possibly restricted. The system is designed to help detect moving obstacles within the system limits, and warns the driver so as to avoid critical situations or reduce the consequences of accidents when turning off or changing lanes.

Electronic Stability Program (ESP®)



The Electronic Stability Program significantly reduces the risk of skidding by selectively braking individual wheels, thus preventing loss of control of the vehicle in curves and emergency steering manoeuvres.

Lane Assist (SPA)



Lane Assist (SPA) detects when the vehicle unintentionally leaves a marked lane. If it crosses the markings, the driver is warned by a clear vibration through the driver's seat.

Bi-xenon headlamps



Compared with halogen headlamps, bi-xenon headlamps mean better illumination of the road

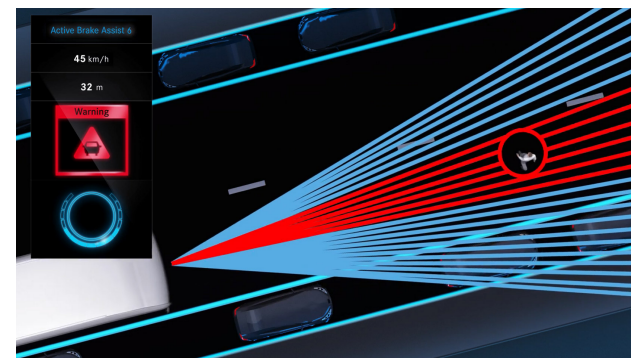
surface with less energy consumption and a longer life.

Rain-light sensor



The rain sensor and automatic driving light are assist systems that activate automated functions by means of a sensor system and relieve the driver of routine tasks.

Active Brake Assist 6



The emergency braking system ABA 6 assists the driver by automatically initiating emergency braking if there is a risk of rear-impact collision with vehicles in front or stationary obstacles. It also detects moving or stationary persons and cyclists in front of the vehicle. The system reacts to this with an acoustic and visual warning to the driver as well as an automatically initiated partial braking or emergency braking.

Electronic Braking Assist (BAS)

By constantly comparing the data, the electronic braking assist system immediately detects if the speed at which the brake pedal is pressed suddenly exceeds the usual level, and in such situations automatically boosts the maximum braking power to within fractions of a second. This significantly shortens the stopping distance of the vehicle.

AquaBlade® windscreen wipers



The AquaBlade® windscreen wipers ensure optimum visibility at all times and, thanks to an ergonomic design, minimise both driving noise and fuel consumption.

MirrorCam

The modern MirrorCam system provides a clear and full view of the road traffic. Equipped with high-resolution cameras, the driving safety is improved and the risk of accidents is minimised. The extended field of vision enables the driver to see pedestrians, cyclists and other road users in the surrounding area. This eliminates the blind spot when turning right.

Traffic Sign Assist (TSA)

The innovative Traffic Sign Assist offers maximum safety and comfort on the road. Thanks to GPS and camera support, the vehicle speed is constantly compared with the current traffic regulations.

Frontguard Assist

Frontguard Assist is an advanced system that was specially developed to warn drivers of pedestrians located immediately in front of the vehicle and also to warn them of an impending accident. Whether you are pulling away or driving slowly (up to 9.3 mph), the intelligent assistance system can detect potential collisions with unprotected road users.

Attention Assist (AtAs)

Attention Assist (AtAs) can detect early signs of driver fatigue and prompt him/her to take a break. In the first few minutes of the drive, the system, via a sensor, determines an individual driving behaviour pattern which is then continuously compared with the current steering behaviour and current driving situation. Based on this, the system warns the driver with audible and visual cues.

LEGAL NOTICES

Some of the product information, illustrations and images contained in this Digital Offering may have been prepared for generic use on Daimler Buses Digital Offerings maintained in different countries around the world. Consequently, some of the information and/or accessories which are not available in some countries or which, in order to satisfy local market demand or regulatory controls in such countries, may only be available in different specifications or configurations. If you are interested in any vehicle model, paint, option or accessory shown on the Internet site and are unsure of its availability or specification in your locality, you should contact Daimler Buses and/or a local authorised dealer for the relevant product, for information of current details in your locality.

All prices specified are recommended retail prices. Prices are current at the time of publication and subject to change without notice.

Provider: Daimler Buses GmbH, Fasanenweg 10, 70771 Leinfelden-Echterdingen, Germany



and Mercedes-Benz are trademarks of Mercedes-Benz Group AG.



10/2025